

DRAGON HABITAT

- High altitude mountains
- Volcanic activity/ lava pools
- Rocky terrain & caves
- Sparse vegetation
- Thermal updrafts
- Rare crystals/ minerals
- Scarcity of water



ADAPTATIONS OF DRAGONS

- Heat-resistant scales - large wingspan
- Sharp claws and teeth territorial behavior

T-REX HABITAT

LATE CRETACEOUS
PERIOD

- PLAINS AND FORESTS
- WARM CLIMATE
- RIVERS AND WETLANDS
- OTHER DINOSAURS



CHARACTERISTICS OF T. REX

- LARGE SKULL
- POWERFUL JAWS
- BIPEDAL



POLAR BEAR HABITAT

- Arctic region
- Sea ice and coasts
- Cold temperatures
- Sparse vegetation
- Marine mammals



ADAPTATIONS OF POLAR BEARS

- Thick fur
- Layer of blubber
- Strong swimmers



AXOLOTL HABITAT

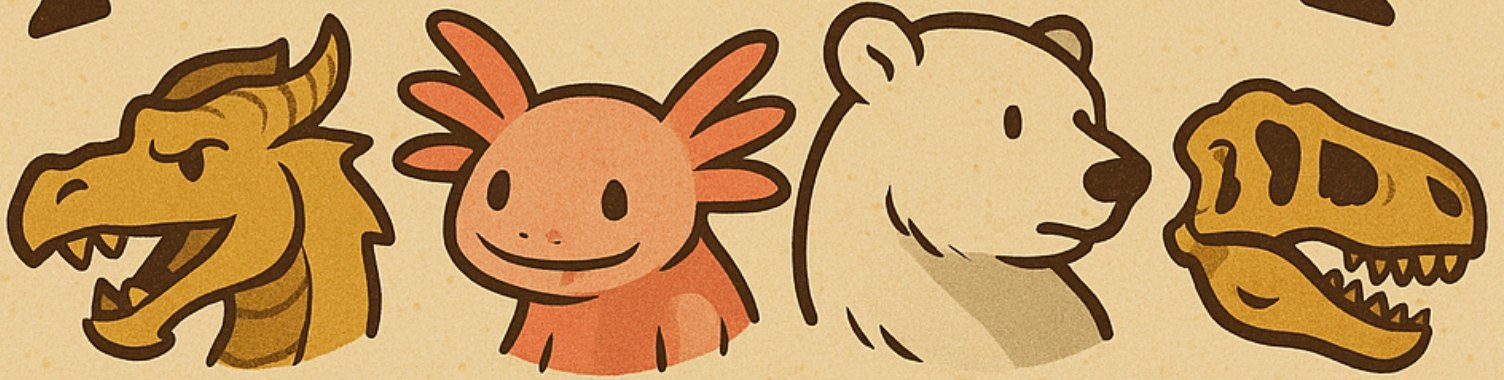
- High altitude lakes
- Calm, shallow water
- Muddy substrate
- Aquatic vegetation
- Abundant invertebrates
- Cool temperatures



ADAPTATIONS OF AXOLOTLS

- Neoteny: (retaining juvenile features)
- External gills
- Regenerating limbs

MYSTERY



ZOO